

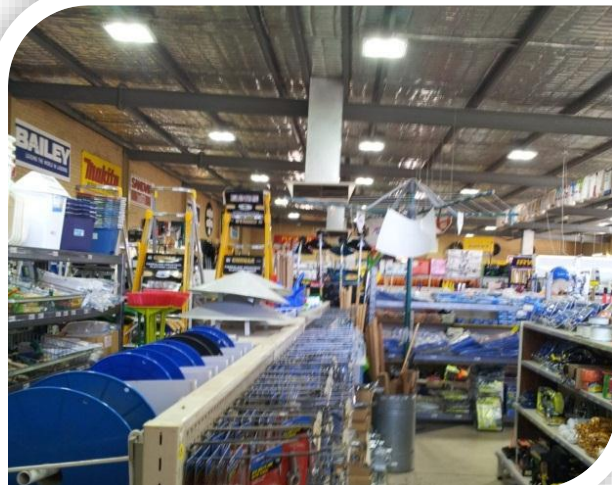
Geckolighting® LED 120w Low Bay



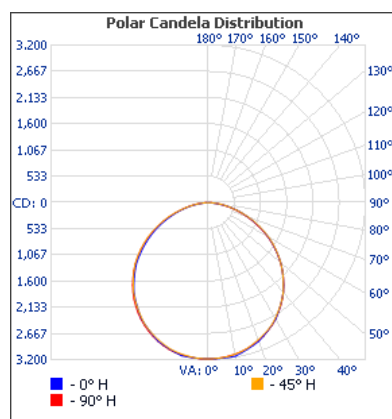
Geckolighting® LED 120w Low Bay/Panel lights.
Ideal lighting unit for all applications that currently use up to 300W MH low bay lighting, including freezer lighting, warehouse & retail lighting, factory showroom lighting, petrol station canopy lighting, etc.

Features:

- Industry standard size – 585mm x 585mm.
- Slimline - Only 95mm height.
- Recessed In ceiling or suspended installation
- Optional Mounting box available for surface mount
- Will operate in freezers/chillers/cool rooms
- No IR radiation, UV or mercury
- Long life – less maintenance
- Low Heat



| Model Number | 81-PANEL120 |
|---------------------------------------|------------------------------------------------------|
| LED power: | 120w |
| Input Voltage | 85-265VAC |
| Frequency Range | 50/60Hz |
| LED source: | 4 x 30w LED |
| Luminous flux: | 9,100lm |
| Power Factor(PF) | >0.95 |
| Total Harmonic Distortion (Thd) | <9% |
| Inrush Current (typ.) | COLD START 65A(t=425 s measured at 50% I) at 230VAC |
| Luminous efficiency: | >80-90lm/w |
| Light efficiency: | >90% |
| Operating temperature: | -30°C ~ +55°C |
| Color Temperature | Cool white: 6000K-6500K |
| Color Index(CRI) | Ra>80 |
| Light Distribution Curve/Beam Pattern | Rectangular optical spot |
| Lighting angle: | 120° |
| Light Body& Lampshade | Aluminum Alloy And PC |
| IP Rating: | IP65 |
| Working Life | 50,000 Hrs |
| Dimensions – Width x Height x Depth: | 585mm x 585mm x 95mm |
| Net Weight | 13Kgs |



Illuminance at a Distance

| | Center Beam LUX | Beam Width |
|-------|-----------------|-------------|
| 2.0M | 796.16 LUX | 6.0M 6.1M |
| 4.0M | 199.04 LUX | 11.9M 12.1M |
| 6.0M | 88.46 LUX | 17.9M 18.2M |
| 8.0M | 49.76 LUX | 23.8M 24.2M |
| 10.0M | 31.85 LUX | 29.8M 30.3M |
| 12.0M | 22.12 LUX | 35.8M 36.3M |

■ Vert. Spread: 112.3° ■ Horiz. Spread: 113.1°

Geckolighting
Phone: (08) 9248 6205
Fax: (08) 9248 3501
sales@geckolighting.com.au



www.geckolighting.com.au

