

# Geckolighting® LED Low Bay Panels

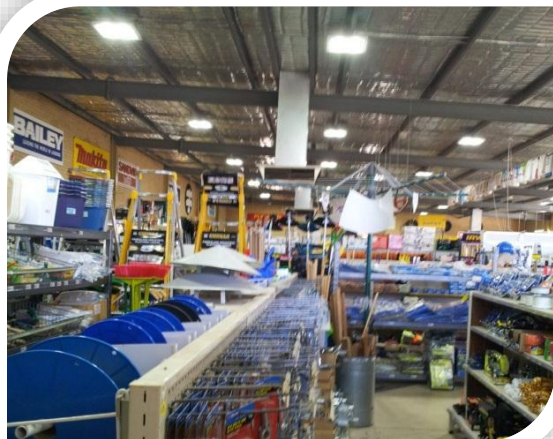


## Geckolighting® LED Low Bay Panel lights.

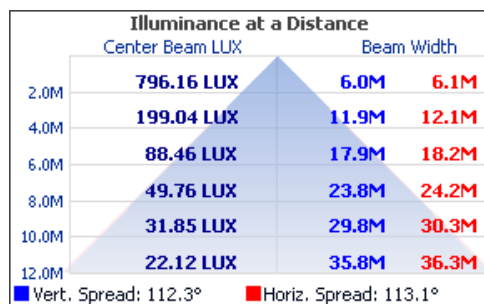
Ideal lighting unit for all applications that currently use up to 300W MH low bay lighting, including freezer lighting, warehouse & retail lighting, factory showroom lighting, petrol station canopy lighting, etc.

### Features:

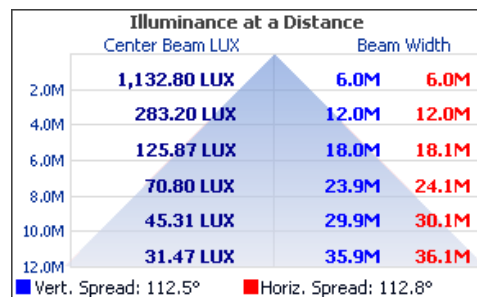
- Industry standard size – 585mm x 585mm.
- Slimline - Only 95mm height.
- Recessed In ceiling or suspended installation
- Optional Mounting box available for surface mount
- Will operate in freezers/chillers/cool rooms
- No IR radiation, UV or mercury
- Long life – less maintenance
- Low Heat



Model Number	81-PANEL120	81-PANEL160
LED power:	120w	160w
Input Voltage	85-265VAC	
Frequency Range	50/60Hz	
LED source:	4 x 30w LED	4 x 40w LED
Luminous flux:	10,800lm	12,900lm
Power Factor(PF)	>0.95	
Total Harmonic Distortion ( Thd)	<9%	
Inrush Current (typ.)	COLD START 65A(t =425 s measured at 50% I ) at 230VAC	
Luminous efficiency:	>80-90lm/w	
Light efficiency:	>90%	
Operating temperature:	-30°C ~ +55°C	
Color Temperature	Cool white: 6000K-6500K	
Color Index(CRI)	Ra>80	
Light Distribution Curve/Beam Pattern	Rectangular optical spot	
Lighting angle:	120°	
Light Body& Lampshade	Aluminum Alloy And PC	
IP Rating:	IP65	
Working Life	50,000 Hrs	
Dimensions – Width x Height x Depth:	585mm x 585mm x 95mm	
Net Weight	13Kgs	



120w PANEL



160w PANEL

Geckolighting  
 Phone: (08) 9248 6205  
 Fax: (08) 9248 3501  
 sales@geckolighting.com.au

Surface Mounting boxes  
 Available.



www.geckolighting.com.au

