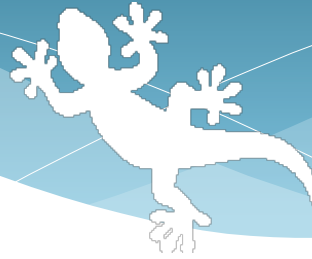
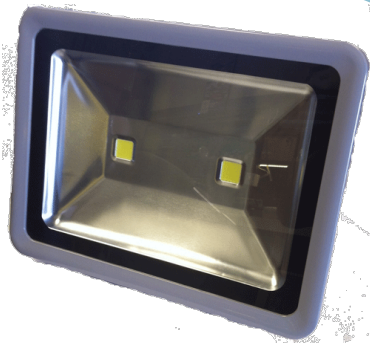


Geckolighting® 100w LED Floodlight



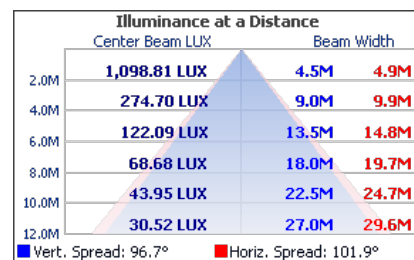
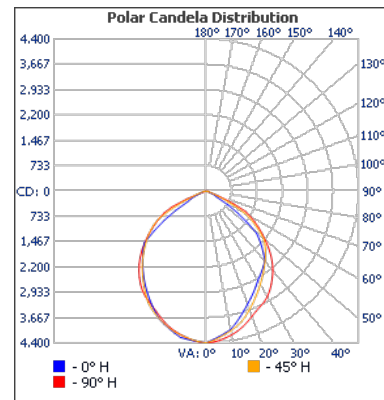
Geckolighting® LED 100w Flood Light

Robust lighting unit with polycarbonate lens (NO GLASS) for outside or inside applications including security and signage lighting, yards, open areas, sheds, mobile accommodation and display/feature lighting. Also cars, trucks and boats.

Gecko LED floodlights deliver long life, high performance and minimum power usage. Suitable for Australian 240VAC power. Standard colour is Cool White (6000-6500K).



Model Number	70-FL100
LED power:	100W
Total power:	101W
Input Voltage	85-265VAC
Frequency Range	50/60Hz
Luminous flux:	>9,380lm
Power Factor(PF)	>0.95
Total Harmonic Distortion (Thd)	<15%
Inrush Current (typ.)	COLD START 75A(t =570 s measured at 50% I) at 230VAC
Luminous efficiency:	>80-90lm/w
Light efficiency:	>90%
Operating temperature:	-30°C ~ +55°C
Color Temperature	CW - Cool white: 6,000K NW - Neutral White: 4,500K WW - Warm white: 3,000K
Color Index(CRI)	Ra>85
Light Distribution Curve/Beam Pattern	Rectangular optical spot
Lighting angle:	Horizontal axis 120°, vertical axis 60°
Light Body& Lampshade	Aluminum Alloy And PC
IP Rating:	IP65
Working Life	50,000 Hrs
Dimensions – Width x Height x Depth:	420mm(W) x 320mm(H) x 190mm(D)
Net Weight	8Kgs



Geckolighting
Phone: (08) 9371 2652
Fax: (08) 9371 2444
sales@geckolighting.com.au



www.geckolighting.com.au

