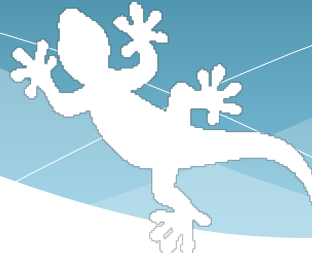


Geckolighting® 40w LED Shop light



Geckolighting® LED 40W shop light

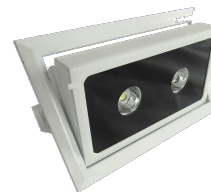
Producing less heat and using less power, Geckolighting® LED shop lights are designed as a direct replacement unit for existing shop light fittings up to 150w.

Features:

- Industry standard cutout size.
- Low heat.
- No IR radiation, UV or mercury
- Long life – less maintenance
- Frosted/clear lens option



Model Number	22-SL40CW 22-SL40WW
LED power:	40W
Input Voltage	85-265VAC
Frequency Range	50/60Hz
Initial luminous flux:	3,800lm
Power Factor(PF)	>0.96
LED source:	2 x 20w LED
Luminous efficiency:	>90-100lm/w
Light efficiency:	>90%
Operating temperature:	-30°C ~ +55°C
Color Temperature	Cool white: 6,000~6,500k Warm white: 3,000~3,300k
Color Index(CRI)	Ra>85
Beam Angle:	60°/120°x60°
Light Body& Lampshade	Aluminum Alloy and PC lens
Working Life	50,000 Hrs
IP Rating:	IP54
Dimensions – Width x Height x Depth:	235mm x 150mm x 125mm
Cutout size:	220mm x 130mm
Net Weight	2Kg



Clear lens option



Geckolighting
Phone: (08) 9371 2652
Fax: (08) 9371 2444
sales@geckolighting.com.au



www.geckolighting.com.au

